

GARI Enterprise

Market Lens

Commodity Intelligence Platform for Procurement & Trading

Press Release

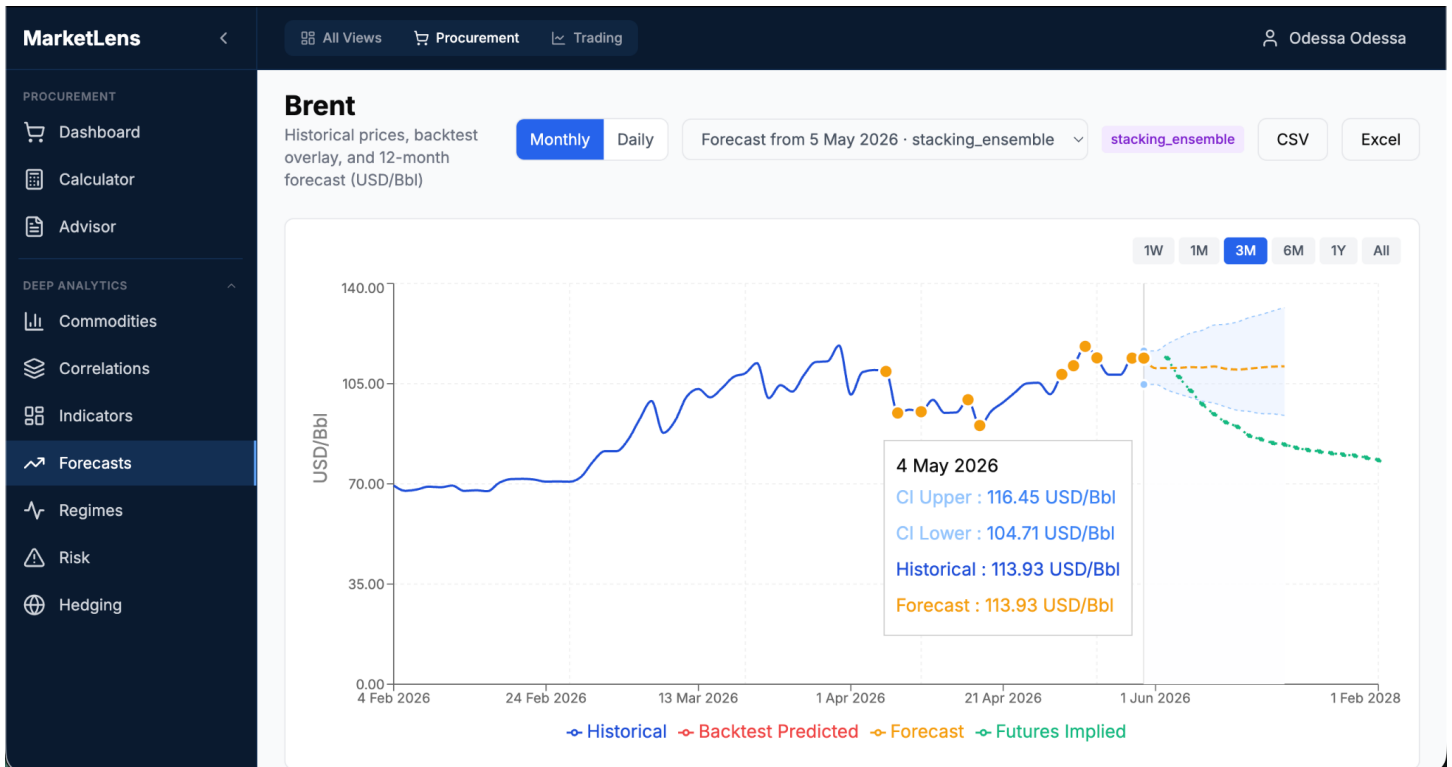
May 5, 2026

Platform:

<https://gari-marketlens.com/>

Full Video Overview:

<https://www.gari-enterprise.ai/>



Beyond Conventional Market Analysis

- Built on ~10 years of modelling and research, not LLM/surface-level analytics
- Commercialised in 2025 after long-term R&D
- Powered by GARI's proprietary **Universal Synaptic Engine**
- Models the globalised world as an interconnected system

The platform captures interactions across infrastructure, transportation, supply chains, raw materials, finance, weather and climate, labour, sentiment, and political and regulatory frameworks – allowing it to reflect how price formation actually emerges.

Coverage

- Over 100 commodities live
- Expanding weekly and on demand
- Global and regional modelling available

Coming soon:

- Supply and demand projections
-

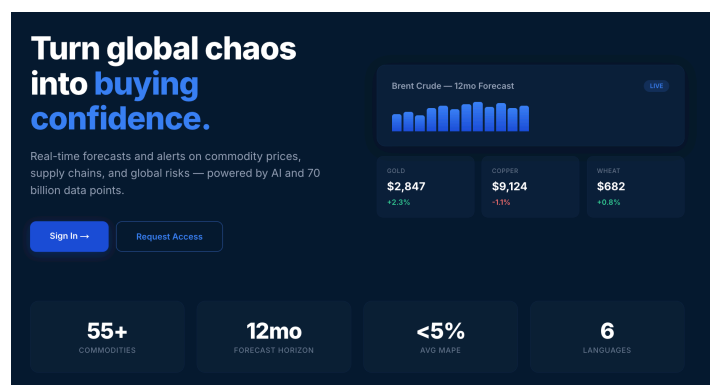
Access

Market Lens is now live:

<https://gari-marketlens.com/>

Full video walkthrough:

<https://www.gari-enterprise.ai/>



Technical Press Release available upon request.

GARI Enterprise s.r.o.

Commodity Intelligence · Systems-Level Modelling

<https://www.gari-enterprise.ai/> | <https://gari-marketlens.com/>

FULL PRESS RELEASE

GARI Enterprise Launches Market Lens

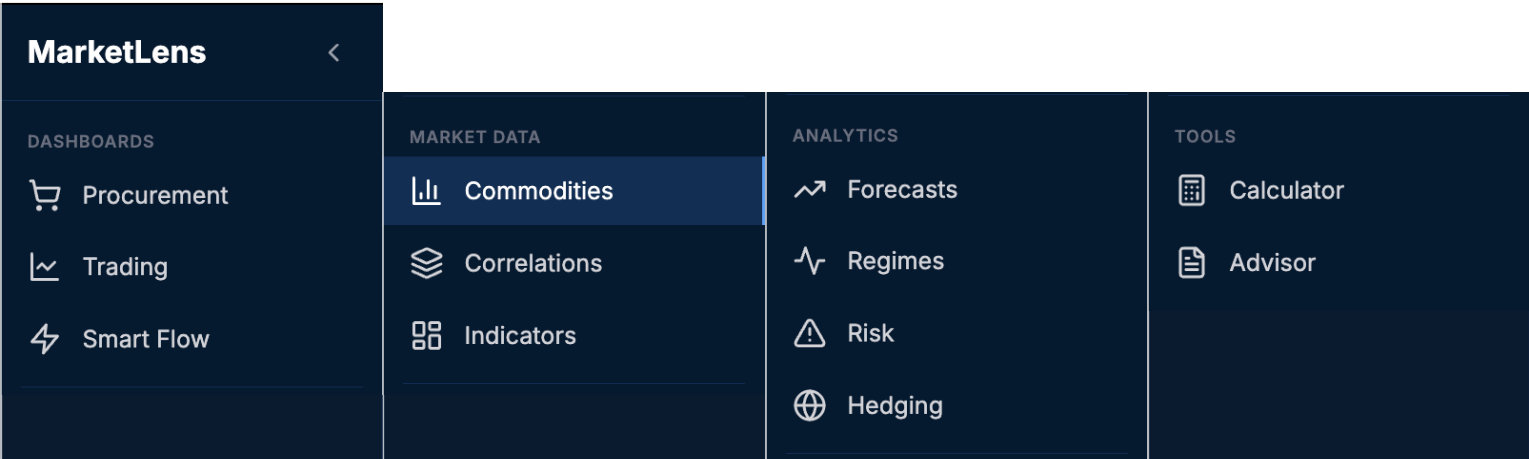
GARI Enterprise has launched its flagship platform Market Lens, a commodity and market intelligence platform designed for procurement teams and trading desks.

Built on nearly a decade of proprietary modelling and following its commercialisation phase in 2025, the platform provides forward-looking visibility into price direction, volatility, and market behaviour across global commodity and equity markets.

At its core, Market Lens is powered by GARI Enterprise’s proprietary modelling system – the Universal Synaptic Engine, a systems-level simulation of the globalised world.

Core Capabilities:

- Forward price direction (short-term and 12-month horizon)
- Volatility and risk exposure
- Market regime detection (trend / volatility states)
- Trading signals and opportunity identification
- Budget impact and procurement timing support
- Scenario modelling



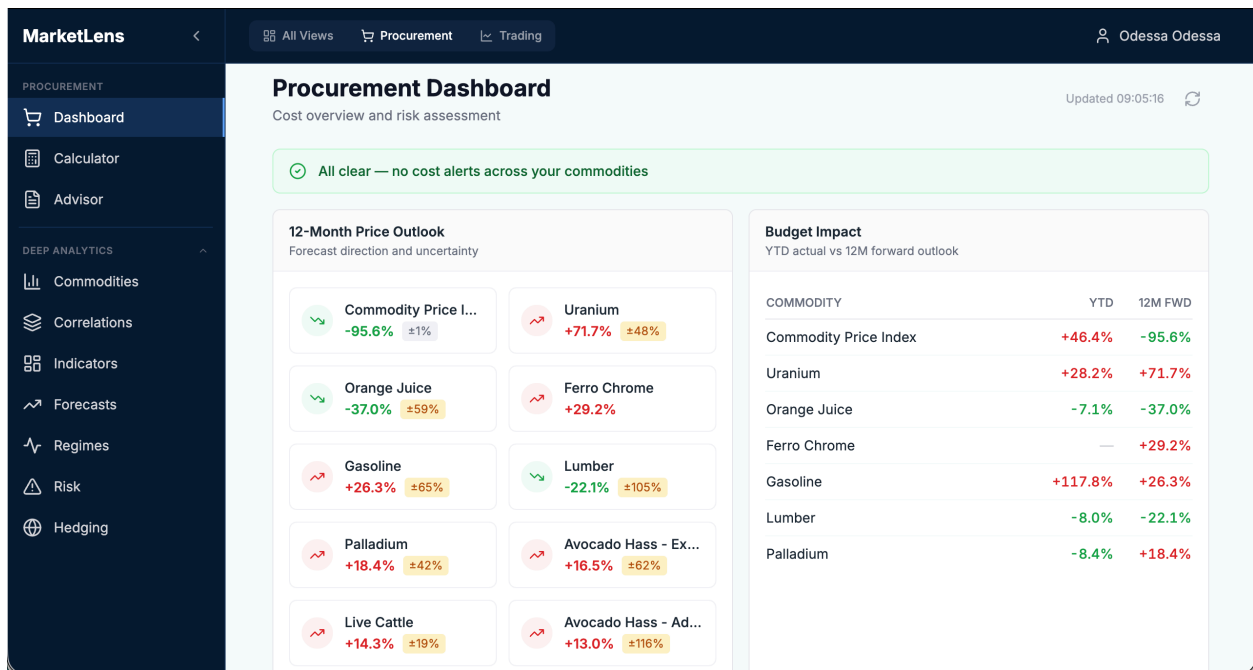
Designed Around Real Decision-Making

Market Lens is structured around two fundamentally different decision environments:

Procurement Platform (Cost, Timing, Exposure)

Built for CFOs, procurement leaders, and operational teams:

- Forward-looking price direction (1 day –12 months)
- Volatility windows and cost-risk exposure
- Budget impact projections
- Hedging guidance
- Smart Buyer Calculator for structured purchasing decisions



This environment supports decisions around when to buy, how much to buy, and how to manage cost under volatility.

Trading Platform (Signals, Positioning, Opportunity)

Built for trading desks and market-facing teams:

- Short-term and medium-term predictive signals
- Market regime detection (trend / volatility states)
- Sentiment and positioning indicators
- Correlation and statistical relationships
- Smart Flow opportunity engine

The screenshot displays the MarketLens trading platform interface. The top navigation bar includes 'All Views', 'Procurement', and 'Trading'. The main dashboard is titled 'TRADING DASHBOARD' and shows a 'DE-RISK' summary with 'urea Low Vol Bull (100%)' and 'Waste Paper Low Vol Bear (99%)'. Below this, there are two tables: 'REGIMES & RISK' and 'FORECAST SIGNALS'. The 'REGIMES & RISK' table lists commodities like CBOE Volatility Index, TTF Gas, Natural Gas, Gold, DJ Commodity Index, Coffee, Iron Ore, Zinc, Tin, and Nickel, along with their regimes, probabilities, and VAR95 values. The 'FORECAST SIGNALS' table lists commodities like TTF Gas, Crude Oil WTI, Oat, Corn, Cotton, Cocoa, Silver, Natural Gas, and Heating Oil, along with their 5D and 21D signals and REV indicators. To the right, there is a 'SMART FLOW' section with a table of commodity signals, including Copper, Wheat, Natural Gas, Palladium, Silver, Aluminum, Brent Spot, Lean Hogs, Iron Ore, Heating Oil, Gold, Gasoline, and Feeder Cattle, with columns for DIR, GRD, and SCORE. Below the main dashboard, a 'Smart Flow' window is open, showing 'Signal detection across commodity markets' and a table of commodity signals with columns for COMMODITY, CATEGORY, SIGNALS, DIRECTION, SCORE, GRADE, and CONFIDENCE. The Smart Flow window also includes a summary of A-GRADE SIGNALS (0), DOMINANT DIRECTION (bearish), COT EXTREMES (2), and MOST ACTIVE (Metals).

Smart Flow detects unusual positioning, volume, volatility, regime, and correlation patterns across commodity markets and scores them as trading opportunities.

This environment supports decisions around market direction, positioning, and opportunity identification.

GARI Enterprise s.r.o.

Commodity Intelligence · Systems-Level Modelling

<https://www.gari-enterprise.ai/> | <https://gari-marketlens.com/>

Built on Systems-Level Modelling

Universal Synaptic Engine

Market Lens is powered by GARI's proprietary modelling system – the Universal Synaptic Engine, a digital twin of the globalised world developed over nearly 10 years and integrating more than 70 billion data points.

The system functions as a simulation of the globalised world, modelling how interconnected real-world systems influence one another and collectively shape economic and market behaviour.

It integrates interacting layers including trade flows, supply chains, infrastructure, transportation, raw materials, manufacturing, weather and climate dynamics, labour conditions, finance, sentiment, and political and regulatory environments.

Rather than analysing sectors or variables in isolation, the Universal Synaptic Engine models how disruptions, pressures, and behavioural changes propagate through the global system over time – allowing Market Lens to reflect how price behaviour and volatility actually emerge.

Beyond SaaS – Platform + Intelligence

Market Lens is not positioned as a standalone software tool.

The platform provides direct access to forecasts, signals, and analytical outputs, while enterprise clients receive tailored support alongside it.

GARI Enterprise is a company providing operational and strategic intelligence and support, deep and complex analytical work, scenario building and forecasting, and consulting services. GARI works with the corporate, private, and public sectors.



Forward Intelligence for a Complex World

GARI models how the global system actually functions — and translates it into actionable insight on what is likely to happen next.

Coverage and Flexibility

Market Lens currently covers over 100 commodities across major categories, including: energy, metals, agricultural products, industrial materials, polymers, and others.

The platform is designed to cover all commodity types, from raw materials and energy inputs to semi-finished and fully finished products – from copper to PVC to avocados to cars.

- New commodities and indices are onboarded weekly and on demand
- Coverage extends across global markets and can be tailored regionally
- Modelling granularity is adjusted based on client requirements

The platform delivers both short-term and 12-month forward projections, alongside volatility and risk insights.

Upcoming capabilities include supply and demand projections, expanding forward-looking structural visibility.

The screenshot displays the 'Commodity Correlations' dashboard in MarketLens. The interface includes a sidebar with navigation options like 'Procurement', 'Trading', 'Smart Flow', 'Commodities', 'Correlations', 'Indicators', 'Forecasts', 'Regimes', 'Risk', 'Hedging', 'Calculator', and 'Advisor'. The main content area shows a correlation matrix for 20 commodities over a 1-year period. The matrix is color-coded, with green indicating positive correlations and red indicating negative correlations. The diagonal elements are all 1.00.

	Aluminum	Avocado...	Avocado...	Avocado...	Brent	Brent Spot	CBOE Vo...	Cocoa	Coffee	Copper	Corn	Cotton	Crude Oil	DJ Com...	Feeder Cat	Ferro Chro	Gasoline
Aluminum	1.00	-0.68	-0.84	-0.75	0.71	0.70	0.35	-0.90	-0.40	0.81	0.55	0.46	0.68	0.96	0.65	0.86	0.62
Avocado Hass - Adelantado	-0.68	1.00	0.93	0.92	0.06	0.05	-0.32	0.73	-0.17	-0.43	-0.75	0.61	0.12	-0.54	-0.16	-0.53	0.22
Avocado Hass - Extra	-0.84	0.93	1.00	0.96	-0.36	-0.34	-0.28	0.94	0.07	-0.67	-0.40	-0.00	-0.30	-0.76	-0.71	-0.72	-0.21
Avocado Hass - Primera	-0.75	0.92	0.96	1.00	-0.24	-0.23	-0.19	0.88	-0.12	-0.55	-0.35	0.09	-0.17	-0.64	-0.75	-0.67	-0.08
Brent	0.71	0.06	-0.36	-0.24	1.00	0.98	0.56	-0.55	-0.57	0.44	0.49	0.71	0.99	0.84	0.35	0.68	0.97
Brent Spot	0.70	0.05	-0.34	-0.23	0.98	1.00	0.57	-0.53	-0.55	0.43	0.44	0.71	0.98	0.82	0.34	0.71	0.95
CBOE Volatility Index	0.35	-0.32	-0.28	-0.19	0.56	0.57	1.00	-0.39	-0.26	0.17	0.49	0.13	0.55	0.50	0.03	0.10	0.52
Cocoa	-0.90	0.73	0.94	0.88	-0.55	-0.53	-0.39	1.00	0.27	-0.72	-0.41	-0.17	-0.50	-0.86	-0.76	-0.80	-0.42
Coffee	-0.40	-0.17	0.07	-0.12	-0.57	-0.55	-0.26	0.27	1.00	-0.52	-0.08	-0.37	-0.59	-0.49	-0.14	-0.34	-0.54
Copper	0.81	-0.43	-0.67	-0.55	0.44	0.43	0.17	-0.72	-0.52	1.00	0.45	0.26	0.42	0.76	0.44	0.57	0.34
Corn	0.55	-0.75	-0.40	-0.35	0.49	0.44	0.49	-0.41	-0.08	0.45	1.00	0.35	0.46	0.62	-0.01	0.14	0.46
Cotton	0.46	0.61	-0.00	0.09	0.71	0.71	0.13	-0.17	-0.37	0.26	0.35	1.00	0.73	0.52	0.13	0.43	0.81
Crude Oil WTI	0.68	0.12	-0.30	-0.17	0.99	0.98	0.55	-0.50	-0.59	0.42	0.46	0.73	1.00	0.81	0.31	0.66	0.97
DJ Commodity Index	0.96	-0.54	-0.76	-0.64	0.84	0.82	0.50	-0.86	-0.49	0.76	0.82	0.52	0.81	1.00	0.57	0.82	0.76
Feeder Cattle	0.65	-0.16	-0.71	-0.75	0.35	0.34	0.03	-0.76	-0.14	0.44	-0.01	0.13	0.31	0.57	1.00	0.75	0.24
Ferro Chrome	0.86	-0.53	-0.72	-0.67	0.68	0.71	0.10	-0.80	-0.34	0.57	0.14	0.43	0.66	0.82	0.75	1.00	0.58
Gasoline	0.62	0.22	-0.21	-0.08	0.97	0.95	0.52	-0.42	-0.54	0.34	0.46	0.81	0.97	0.76	0.24	0.58	1.00
Gold	0.88	-0.73	-0.92	-0.85	0.43	0.42	0.34	-0.94	-0.28	0.80	0.48	0.07	0.38	0.83	0.68	0.69	0.29
Heating Oil	0.78	-0.12	-0.50	-0.39	0.97	0.96	0.61	-0.67	-0.52	0.50	0.51	0.63	0.96	0.89	0.42	0.75	0.93
Iron Ore	0.59	-0.51	-0.72	-0.81	0.24	0.23	0.01	-0.62	0.31	0.28	0.30	0.16	0.19	0.48	0.66	0.62	0.15
Lean Hogs	-0.40	0.74	0.67	0.75	0.09	0.07	-0.11	0.53	-0.50	-0.25	-0.36	0.17	0.14	-0.29	-0.34	-0.28	0.16
Live Cattle	0.65	-0.00	-0.55	-0.52	0.50	0.47	0.03	-0.64	-0.35	0.44	0.03	0.40	0.49	0.81	0.88	0.75	0.43
Natural Gas	-0.10	-0.45	-0.13	-0.15	-0.43	-0.39	-0.14	0.04	0.43	0.03	0.10	-0.43	-0.44	-0.16	-0.27	-0.21	-0.47
Nickel	0.78	-0.27	-0.52	-0.42	0.60	0.53	0.24	-0.64	-0.51	0.75	0.45	0.46	0.56	0.79	0.51	0.51	0.53
Oat	-0.25	0.55	0.62	0.75	0.28	0.27	0.25	0.46	-0.49	-0.11	0.10	0.34	0.34	-0.08	-0.59	-0.34	0.38
Orange Juice	-0.65	0.83	0.81	0.79	-0.27	-0.23	-0.29	0.74	-0.08	-0.38	-0.41	0.02	-0.31	-0.58	-0.45	-0.49	-0.18
Palladium	0.73	-0.69	-0.86	-0.82	0.14	0.15	0.06	-0.80	-0.18	0.80	0.29	-0.10	0.09	0.61	0.64	0.58	-0.01
Platinum	0.82	-0.60	-0.85	-0.79	0.33	0.33	0.11	-0.84	-0.32	0.83	0.34	0.05	0.28	0.73	0.69	0.67	0.17

Built for Real-World Market Conditions

Market Lens is designed to operate under real-world complexity, including:

- Geopolitical disruption
- Supply chain shifts
- Weather and climate dynamics
- Structural changes in production, land use, and resource availability
- Market sentiment and behavioural shifts

Most analytical approaches operate within vertical silos (e.g. agriculture, industry, energy). GARI models these simultaneously within a globalised system, capturing how changes propagate across sectors and regions.

The result is not only analysis, but decision advantage under changing conditions.

Availability

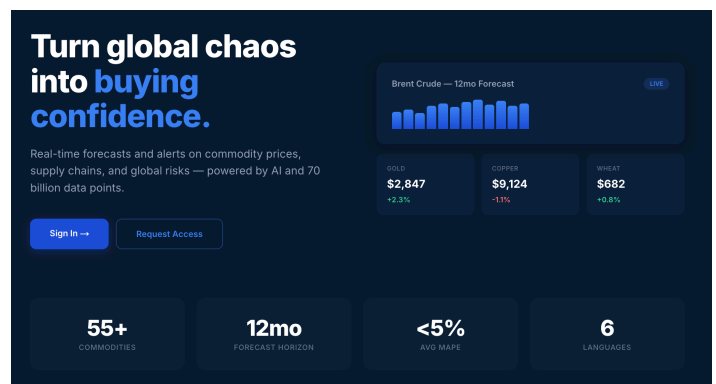
Market Lens is now live:

<https://gari-marketlens.com/>

Demo environment available upon request
Alpha environment (internal / preview)

Full platform overview:

<https://www.gari-enterprise.ai/>



Contact

Odessa Primus
CEO, GARI Enterprise
odessa@globari.org
+420 776 331 657

GARI Enterprise s.r.o.

Commodity Intelligence · Systems-Level Modelling

<https://www.gari-enterprise.ai/> | <https://gari-marketlens.com/>